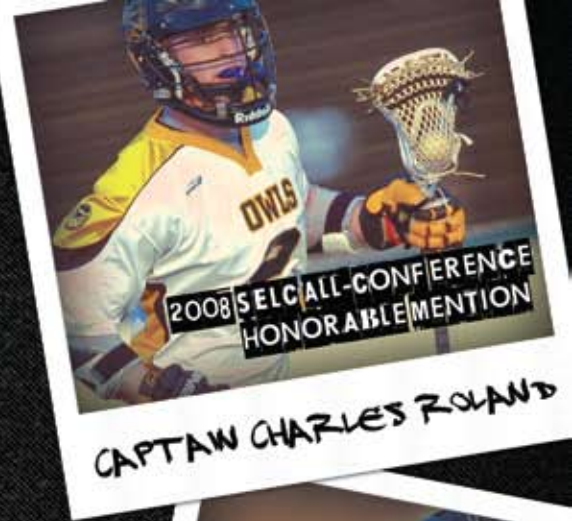
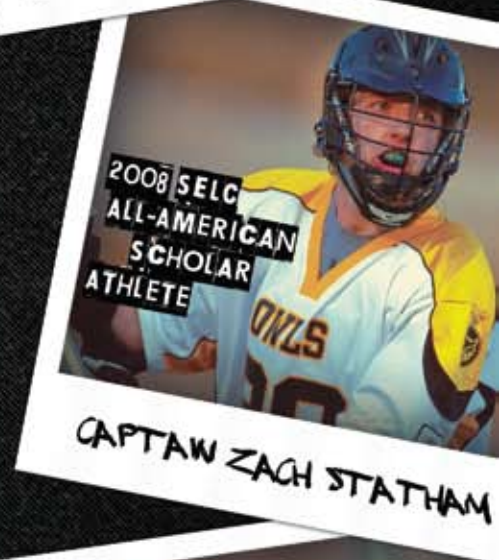


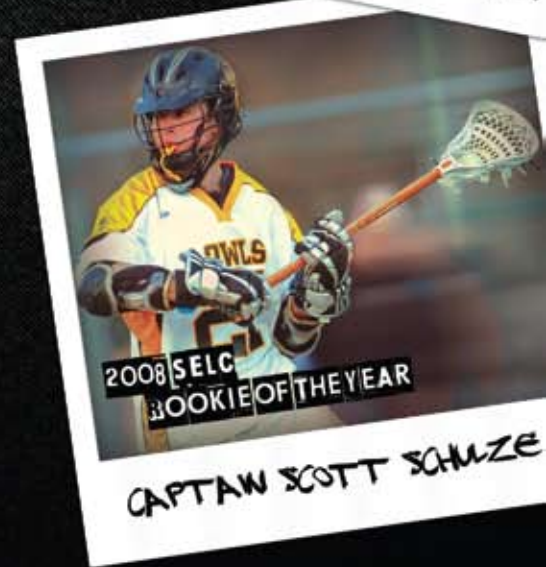
KENNESAW STATE LACROSSE CLUB



CAPTAIN CHARLES ROLAND



CAPTAIN ZACH STATHAM



CAPTAIN SCOTT SCHUIZE

2009

INFORMATION AND MEDIA GUIDE
WWW.KSULAX.COM

2009 KSU Club Lacrosse General Information

Lacrosse Quick Facts

Name: Kennesaw State University
 Location: Kennesaw, Georgia
 Founded: 1963
 Enrollment: 21,060
 Nickname: Fighting Owls
 Colors: Black and Gold
 Field Surface: Grass
 Affiliation: MCLA Division 2
 Conference: SELC
 Official Website: www.ksulax.com
 University President: Dr. Dan Papp
 Club Sports Director: Laura St. Onge
 Head Coach: Ken Byers
 Assistant Coach: Mark Stopher
 Team Physician: Mark Tomasello
 Team President: Zach Statham
 Team Captain: Charles Roland
 Team Captain: Scott Schulze

DATE	DAY	TIME	OPPONENT	LOCATION
Jan. 31	Sat.	3 PM	MTSU	KSU - Intramural Field
Feb. 7	Sat.	4 PM	UNC - Greensboro	KSU - Intramural Field
Feb. 8	Sun.	2 PM	Mercer	KSU - Intramural Field
Feb. 15	Sun.	2 PM	Georgia Southern	KSU - Intramural Field
Feb. 21	Sat.	2 PM	Georgia State*	KSU - Intramural Field
Feb. 22	Sun.	2 PM	UT - Chattanooga	Chattanooga, TN
Feb. 28	Sat.	2 PM	Furman*	Greenville, SC
Mar. 1	Sun.	1 PM	High Point	Greenville, SC
Mar. 7	Sat.	3 PM	Alabama*	KSU - Intramural Field
Mar. 22	Sun.	4 PM	SCAD	KSU - Intramural Field
Mar. 28	Sat.	1 PM	Eckerd	St. Petersburg, FL
Mar. 29	Sun.	11 AM	North Florida	Jacksonville, FL
Apr. 4	Sat.	2 PM	Tenn. Wesleyan*	Athens, TN
Apr. 10	Fri.	7 PM	Emory*	Atlanta, GA
Apr. 24-22	Fri.-Sun.	All Day	SELC Championship	Atlanta, GA

* Denotes Divisional Game

Kennesaw State University proudly supports the following collegiate club sports:

KSU Competitive Cheer Club

KSU Cycling Club

KSU Roller Hockey Club

KSU Rugby Club

KSU Ultimate Frisbee Club

KSU Competitive Fishing Club

KSU Co-Ed Tennis

KSU Triathlon Club

KSU Men's Soccer Club

KSU Ice Hockey Club

KSU Men's Lacrosse Club

KSU Women's Lacrosse Club

KSU Wrestling Club

KSU Women's Soccer Club



Kennesaw State University
 Collegiate Club Sports
 1000 Chastain Road
 Kennesaw, GA. 30144 ; Mail Drop 0302
 Recreation Center Building Room 154
 Phone 678. 797. 2263

www.ksuclubsports.com

Cover Design by Gueric Sloan • Text by Ken Byers • Bio Photos By Kelly Byers • Layout by Brett Davies

2009 KSU Club Lacrosse Season Preview

Overview

The Kennesaw State Owls enter the 2009 lacrosse season with a different perspective. The team realizes that each and every game is important. Nothing can or will be taken for granted. Prior to last season everything came too easy but the team's battle cry this season is "right here, right now." With more experienced players returning and a coaching staff that has built much from last season. The Owls feel they have a real opportunity to advance into the Southeastern Lacrosse Conference playoffs. Four different players earned SELC awards and they are expected to perform at a high level this season. Many local recruits will be given the opportunity to contribute this spring.

Attack

Kennesaw State's attack unit returns a wealth of talent. Leading the charge is 2008 SELC "Rookie of the Year" SCOTT SCHULZE. His 22 goals and 13 assists led the Owls offensive production in 2008. The teams "Most Improved Player" in 2008 was TIM MINICK. He is expected to compliment the attack from his position on the crease. Battling each other for the third spot on attack will be returning sophomore BRIAN BROE and the highly recruited, sharp shooter MANNY SAVAS. Both are talented players and will see extensive time on offense. Adding depth to the attack unit are JONNY SLUTZKY and CHRIS LANQUIST. These players are good athletes and should add some scoring punch. The success of the offense will rest with the production of the attack. Accurate shooting will be the key for the Owls offense to be successful.

Midfield

The Owls midfield has sufficient depth and experience to compete with any team in the league. Headlining the midfield will be SELC honorable mention player, junior, CHARLES ROLAND. His 15 goals and 8 assists were solid numbers in 2008. Hard running JUSTIN MCKAY had a terrific year as a freshman and will be teamed with JAMES NASSUR. The second line has a lot of potential that will add to the offense. The speedy ISOM WHITE will be counted on heavily. Running along side him will be freshman ROBB DREHER and returning sophomore WILL KANSTIOS. The third line should be improved with the quality of athletes now playing for the Owls. Freshmen DREW GREESON and JUSTIN KRATZER will be teamed with returning veterans ALEX HERRMANN and DEAN DOBSON to balance the field. Other midfielders that will help KSU this spring include MITCH KRUSE, SCOTT HEARN, LOUIS LIM, BRIAN WITT, MIKE MCCABE, and ELLIOTT MITCHELL. Positions will change as each midfielder finds his role on the squad. Depth at this position is a luxury that KSU has not possessed in previous seasons.

Defense

Kennesaw State University returns many of their talented defenders for the 2009 season. Leading the defense is 2008 Honorable Mention goalie KYLE HANSEN. A terrific addition for the Owls this season is NOAH ROSENBLUM a transfer from Williams College. Second team SELC player ZACH STATHAM returns to patrol the long stick midfield position. MATT BYRNE performed well again last year and will be moved to the crease this spring. JIM FAUCETTE, MURRAY WEBB, DAN BITTINGER and TYLER SCHRAMPFER will be used in a rotation on close defense. MICHAEL JAECKEL and ZACH HARRELL will supplement the backline and relieve the starters when needed. SCOTT MATHEWS will pull double duty as a defender and goalie. This defensive unit will keep the score low and make opponents pay for any goals scored this season.

Coaching Corner

Head Coach KEN BYERS has emphasized the need for commitment and dedication from the team needed in order to be successful in the SELC. As a program KSU has been acknowledged as a team that is building for the future. According to Coach Byers "We are getting better everyday. Last year's efforts will be beneficial to us this season." Assistant Coach MARK STOPHER returns to the sideline this season for input and guidance. Support on campus and from administration continues to be very positive. Lacrosse at KSU is an attraction for more talented recruits each year. The Kennesaw State lacrosse program is based on a "student first, athlete second" philosophy and the team strictly enforces this policy. The team experienced success during the fall and is looking forward to regular success against MCLA opponents. Only time will tell how high the KSU Owls will fly this season. Everything seems to be in place for the Kennesaw State University Owl Lacrosse Club to continue the success of the past three seasons.



Captains Zach Statham #29 (left), Charles Roland #2 (center) and Scott Schulze #21 (right) look forward to leading the Owls to a successful 2009 season.

2009 KSU Club Lacrosse Team Roster

Numerical

#	Name	Position	Height	Weight	High School	Year
1	Jim Nassur	Midfield	5' 8"	140 lbs.	Kell	Sophomore
2	Charles Roland	Midfield	6' 0"	195 lbs.	Etowah	Junior
3	Alex Herrmann	Midfield	5' 11"	200 lbs.	Starr's Mill	Sophomore
4	Brian Broe	Attack	5' 10"	160 lbs.	Sprayberry	Freshman
5	Michael Jaeckel	Defense	5' 9"	170 lbs.	Starr's Mill	Sophomore
6	Isom White	Midfield	6' 0"	150 lbs.	McEachern	Junior
7	Justin Kratzer	Midfield	6' 0"	180 lbs.	North Cobb	Freshman
8	Noah Rosenblum	Goalie	5' 11"	175 lbs.	Maclay	Sophomore
9	Dan Bittering	Defense	6' 1"	215 lbs.	Pope	Junior
10	Dean Dobson	Midfield	6' 1"	175 lbs.	Lassiter	Junior
11	Chris Lanquist	Midfield	5' 10"	130 lbs.	Wheeler	Freshman
12	Will Kantsios	Midfield	5' 8"	160 lbs.	North Springs	Sophomore
13	Louis Lim	Midfield	5' 8"	155 lbs.	Wheeler	Freshman
14	Scott Hearn	Midfield	5' 9"	160 lbs.	Hillgrove	Freshman
15	Jon Slutzky	Attack	5' 11"	165 lbs.	Wheeler	Freshman
16	Mike McCabe	Midfield	5' 11"	165 lbs.	Trinity Pawling	Senior
17	Matt Byrne	Defense	6' 1"	215 lbs.	Blessed Trinity	Senior
18	Brian Witt	Midfield	6' 0"	155 lbs.	Harrison	Junior
19	Justin McKay	Midfield	5' 11"	170 lbs.	South Forsyth	Sophomore
20	Tyler Schrampher	Defense	6' 0"	200 lbs.	Kennesaw Mountain	Freshman
21	Scott Schulze	Attack	5' 8"	160 lbs.	Northview	Sophomore
22	Kyle Hansen	Goalie	6' 1"	180 lbs.	McCallie School	Junior
23	Drew Greeson	Midfield	5' 11"	145 lbs.	Etowah	Freshman
24	Tim Minick	Attack	5' 11"	210 lbs.	Kennesaw Mountain	Junior
25	Murray Webb	Defense	6' 3"	220 lbs.	The Webb School	Junior
26	Robb Dreher	Midfield	6' 1"	170 lbs.	Etowah	Freshman
27	Mitch Kruse	Midfield	5' 10"	180 lbs.	Woodstock	Senior
28	James Faucette	Defense	6' 2"	210 lbs.	Kennesaw Mountain	Junior
29	Zach Statham	Defense	6' 0"	160 lbs.	Kell	Junior
30	Scott Mathews	Goal/Def.	6' 1"	185 lbs.	Sprayberry	Freshman
31	Manny Savas	Attack	6' 0"	175 lbs.	Wheeler	Freshman
32	Elliot Mitchell	Midfield	5' 11"	165 lbs.	Kell	Freshman
33	Zach Harrell	Defense	5' 11"	175 lbs.	Starr's Mill	Freshman

Alphabetical

#	Name
9	Bittering, Dan
4	Broe, Brian
17	Byrne, Matt
10	Dobson, Dean
26	Dreher, Robb
28	Faucette, James
23	Greeson, Drew
22	Hansen, Kyle
33	Harrell, Zach
14	Hearn, Scott
3	Herrmann, Alex
5	Jaeckel, Michael
12	Kantsios, Will
7	Kratzer, Justin
27	Kruse, Mitch
11	Lanquist, Chris
13	Lim, Louis
30	Mathews, Scott
16	McCabe, Mike
19	McKay, Justin
24	Minick, Tim
32	Mitchell, Elliot
1	Nassur, Jim
2	Roland, Charles
8	Rosenblum, Noah
31	Savas, Manny
20	Schrampher, Tyler
21	Schulze, Scott
15	Slutzky, Jon
29	Statham, Zach
25	Webb, Murray
6	White, Isom
18	Witt, Brian

Head Coach Ken Byers **Assistant Coach** Mark Stopher **Team Trainer** Michael Tomasello **Manager** Jamie Durio

2009 KSU Owls Club Lacrosse Team Photo



2009 KSU Club Lacrosse Player Biographies



1 Jimmy Nassur Midfield Sophomore 5-8 140 lbs. Kell

Jim had a terrific first year for the Owls after transferring from Georgia Southern. He earned the 2008 KSU Rookie of the Year award for his outstanding effort and contributions to the team as a first year player. He has good stick kills and is very athletic. He produced 4 goals and an assist last season as a first line midfielder. In his spare time Jim enjoys golfing and going to hockey games.

2 Charles Roland Midfield Junior 6-0 195 lbs. Etowah Team Captain

Charles earned SELC Honorable Mention for his midfield play in 2008 tallying 15 goals and 8 assists. He won 40 of 74 face offs. Charles continued to be very versatile last season playing on the man up and man down units. Charles won a NGLL Championship at Etowah in 2006 along with NGLL honors in 2005 and 2006. Charles was awarded the KSU Coaches Award of Excellence in 2008. He enjoys playing Guitar Hero.



3 Alex Herrmann Midfield Sophomore 5-11 200 lbs. Starrs Mill

Alex is an intelligent player that was plugged into the Owl midfield last season. In 2008 he produced 2 goals and picked up 17 ground balls. Alex impressed the coaches with his work ethic and commitment. For his efforts he was awarded the 2008 Coaches Award of Excellence. He plays solid positional defense and is quick on ground balls. Alex is an Eagle Scout, a residence assistant at KSU and holds a black belt in the martial arts.

4 Brian Broe Attack Freshman 5-10 160 lbs. Sprayberry

Brian is looking forward to his second season on the KSU attack. In 2008 he saw spot duty scoring 3 goals and assisted on 3 others. Brian had a strong fall season and will be trying to land a spot as a starter this spring. He sees the field extremely well and sets up teammates for scoring opportunities from behind the goal. He played at Sprayberry HS and was voted Best Attackman in 2007. He enjoys all types of sports in his off time.



5 Michael Jaeckel Defense Sophomore 5-9 170 lbs. Stars Mill

Michael is a hard working defender that is looking forward to the competition at the collegiate level. He comes to the Owls with experience at Starr's Mill HS where he played close defense and LSM. Mike has shown the ability to do whatever it takes to be successful on the field. He enjoys most sports when not playing lacrosse.

6 Isom White Midfield Junior 6-0 150 lbs. McEachern

Isom is the fastest player on the Owls squad and possibly in the entire SELC. He has great endurance and had a productive season playing midfield. Isom recorded 3 goals and 18 ground balls in 2008. He has an excellent attitude and is a team leader. He will be counted on heavily this season to help improve the Owls offensive production. He was the team captain at McEachern HS in 2006. Isom is very active with team activities and projects off the field as well.



2009 KSU Club Lacrosse Player Biographies

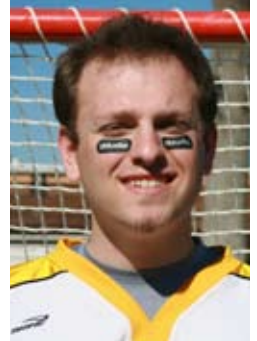


7 Justin Kratzer Midfield Freshman 6-0 178 lbs. North Cobb

Justin made a terrific impression on the coaches during the fall season. He is a strong and talented athlete that is looking forward to his first season at KSU. Justin will add depth to the Owl midfield this season. He will be a future star for seasons to come. Justin played two years at North Cobb HS prior to enrolling at KSU. He enjoys all sports and music.

8 Noah Rosenblum Goalie Sophomore 5-11 175 lbs. Maclay

Noah is the first player from Florida to be on the Owls lacrosse roster. This fall he showed great ability to command the defensive unit and made some tough saves. He will be a great addition to the 2009 KSU squad this coming spring. Noah played four years of varsity lacrosse at Maclay HS earning All District and All County honors.



9 Dan Bittinger Defense Junior 6-1 215 lbs. Pope

Dan was a great addition to the defensive corps in 2008. He is a big, strong and experienced defenseman from Pope HS. He is a good cover man and is very coachable. The Owls will continue to use him on the man down group this season. Dan is looking forward to making another strong contribution defensive unit for the Owls.

10 Dean Dobson Midfield Junior 6-1 175 lbs. Lassiter

Dean played in 2007 and returns to the KSU midfield after taking a year off. He is a steady midfielder and competitive player that gained valuable playing time two years ago. He will be in the rotation to run on the second or third line for the Owls this spring. In his off time Dean enjoys snowboarding and riding dirt bikes.

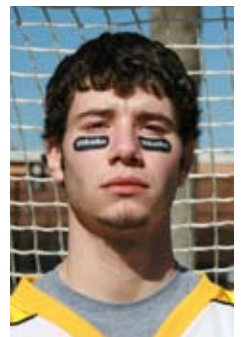


11 Chris Lanquist Midfield Freshman 5-10 130 lbs. Wheeler

Chris will be a terrific player for future KSU squads. He is very quick and possesses sure handed stick skills. He is learning to adjust to the collegiate game. Chris was the Most Improved Player in 2007 and Offensive MVP in 2008 at Wheeler HS. His hobbies include most outdoor sports. He enjoys snowboarding during the winter season most.

12 Will Kantsios Midfield Sophomore 5-8 160 lbs. North Springs

Will gained valuable time on the KSU midfield last season. He has a great attitude and will add depth to the KSU midfield again this spring. Will was team captain at North Springs. He was voted Most Improved Player in 2006 and MVP in 2007. In his off time he enjoys staying in shape by weightlifting.



2009 KSU Club Lacrosse Player Biographies

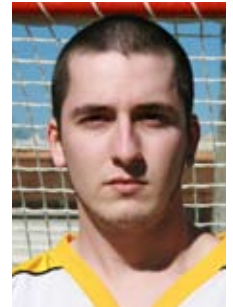


13 Louis Lim Midfield Freshman 5-8 155 lbs. Wheeler

Louis is a freshman midfielder from Wheeler HS. He will be a building block for the Owls in future seasons. He has an outstanding work ethic and is very coachable. He is looking forward to his first season at KSU. Louis will add depth to the KSU midfield in 2009. In high school Louis was a competitive swimmer. He is a big college and pro football fan.

14 Scott Hearn Midfield Freshman 5-9 160 lbs. Hillgrove

Scott is a hard working and committed blue collar midfielder. KSU will use Scott to add depth to the midfield and possibly use him on face offs in 2009. He has shown desire and effort to compete during fall ball. He earned an Academic Award while attending Hillgrove HS. In his spare time he enjoys motorcycles and muscle cars.



15 Jon Slutzky Attack Freshman 5-11 165 lbs. Wheeler

Jonny added great versatility to Kennesaw's attack and midfield units producing 2 goals and 3 assists in 2008. He is expected to produce more points this season and will be used at a variety of positions. At Wheeler HS he was a three year starter. He possesses great quickness and finishes well. Jonny is the Vice President of the KSU lacrosse club. He enjoys working out and staying in great physical shape.

16 Mike McCabe Midfield Senior 5-11 165 lbs. Trinity Pawling

Mike is one of original three students that first organized the Kennesaw State University lacrosse program in 2006. He has been very helpful within the organization and has handled the media relations for the club. Mike is planning to finish his career on the field this season helping the KSU defense. He is an athletic player that will see time this spring adding depth to the defense. During the fall semester Mike studied in Bulgaria and promoting the sport and started a club team there.



17 Matt Byrne Defense Senior 6-1 215 lbs. Blessed Trinity

Matt is in his third season playing defense for the Owls. He is an excellent athlete and a very hard worker. Matt has the ability to cover the opponent's toughest attackmen. He is a terrific leader on and off the field. He earned KSU's Most Improved Player Award in 2007 and was a team captain in 2008. Matt enjoys playing guitar, is an avid golfer and enjoys shooting firearms.

18 Brian Witt Midfield Junior 6-0 155 lbs. Harrison

Brian is looking forward to his first season of competitive lacrosse and will play midfield for the Owls. He has demonstrated a good attitude and desire during early practices this spring. Brian is a talented player from Harrison HS with solid stick skills and vision. He will be used in rotation and add depth to the hard running KSU midfield lines this spring.



2009 KSU Club Lacrosse Player Biographies

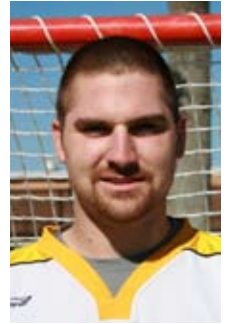


19 Justin McKay Midfield Sophomore 5-11 168 lbs. South Forsyth

Justin was a great addition to the KSU offense in 2008. He scooped up 24 ground balls, scored 7 goals and assisted on 4 others. He ran on the first midfield last season and will be an offensive threat in 2009. Justin holds the scoring record at South Forsyth HS with 33 goals and 12 assists his senior year. He was named Team MVP twice and earned All State honors in 2007. Justin enjoys flag football when he is not playing lacrosse.

20 Tyler Schrampfer Defense Freshman 6-0 200 lbs. Kennesaw Mountain

Tyler has already made an impact during the fall season. His physical style of play has him pushing hard for a starting spot on the close defense. He is a big, intelligent and strong positional defender. His talent and ability will add to a strong defensive unit for KSU this spring. During the off season Tyler is an outdoorsman enjoying hunting and fishing.

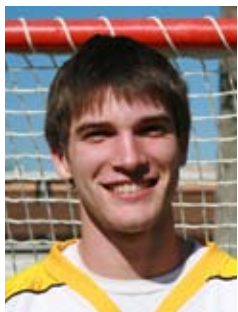


21 Scott Schulze Attack Sophomore 5-8 160 lbs. Northview Team Captain

Scott was the quarterback of the KSU offense in 2008. He is deceptively quick and possesses a hard, accurate shot. He was named SELC Rookie of the Year for 2008 and was awarded KSU's Offensive MVP last season. He was the teams leading scorer producing 22 goals and 13 assists. In high school Scott received MVP recognition from Team Georgia in 2005, 2006 and 2007.

22 Kyle Hansen Goalie Junior 6-1 180 lbs. McCallie School

Kyle continues to be the rock on the defensive side of the ball for Kennesaw State lacrosse. He received Honorable Mention for his play in the Southeastern Lacrosse Conference averaging just under 10 goals against per game in 2008. Kyle was named KSU's 2007 Defensive MVP. He played three years at Roswell HS before finishing at McCallie with a Tennessee High School Championship in 2005. Kyle played collegiate lacrosse for Mars-Hill in North Carolina before transferring to KSU.



23 Drew Greeson Midfield Freshman 5-11 145 lbs. Etowah

Drew is a scrappy player that will be seen sprinting up and down on the Owl midfield this season. He has a terrific attitude about lacrosse and great endurance. He is a very hard worker on and off the field. Drew is quality product from the Etowah HS program where he earned the Coaches Award in 2007. During the fall Drew ran cross country for KSU.

24 Tim Minick Attack Junior 5-11 210 lbs. Kennesaw Mountain

Tim developed into an impact player for KSU in 2008. He produced 15 goals, 2 assists and 16 ground balls. Tim was awarded KSU's Most Improved Player Award for 2008. He was the Kennesaw Mountain HS Team MVP in 2003 and 2004. He is a natural team leader, is a good listener and is very knowledgeable regarding lacrosse. His hobbies include golf, sailing, snowboarding and darts. He is dance instructor and writes songs.



2009 KSU Club Lacrosse Player Biographies



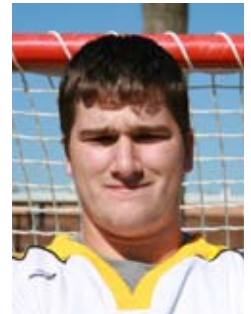
25 Murray Webb Defense Junior 6-3 220 lbs. The Webb School
Murray is a transfer student from Hampton-Sydney College in Virginia. He will help the Owl defense with his size, speed and takeaway ability. KSU anticipates using him at close defense and long stick midfield. Murray has a great love for the sport of lacrosse and is looking forward to playing this season. During his off time he pays attention to investments and the stock market.

26 Robb Dreher Midfield Freshman 6-1 170 lbs. Etowah
Robb will be a terrific player for future KSU squads. He is very quick and possesses sure handed stick skills. He is a midfielder that plays tight defense against opponents. Robb shows outstanding leadership ability and is a positive role model for other students. He played lacrosse at Etowah HS and was the Most Improved Player in 2007. Robb also received recognition at Etowah as a scholar athlete.



27 Mitch Kruse Midfield Senior 5-10 180 lbs. Woodstock
Mitch is another midfielder that will add depth to the KSU midfield corps this spring. He is athletic, plays shut down defense and hustles all the time when on the field. Mitch played for Woodstock HS and earned two NGLL championships during his playing years there. Activities on the lake and training to stay in shape occupy his off time.

28 James Faucette Defense Junior 6-2 210 lbs. Kennesaw Mountain
James returns to the Owl lacrosse squad after sitting out a season during the 2008 campaign. He is a very physical player that hustles a lot and will bolster the close defense. During the 2007 season James played midfield and has made a smooth transition to playing defense for KSU during the fall season. James has great intensity, commitment and a knack for blocking shots from opponents. He enjoys all sports and music.



29 Zach Statham Defense Junior 6-0 160 lbs. Kell Team Captain
Zach received Second Team SELC honors in 2008 and was team's 2008 Defensive MVP with 28 ground balls. He was KSU's first athlete to be recognized as National Scholar-Athlete for his efforts in the classroom and his on field performance. Zach's efforts as President include the team being recognized as the "Best Club Sports Team" on campus in 2008. He earned Defensive MVP at Kell in 2003 and 2005. He earned the KSU's Coach's Award of Excellence in 2007. His hobbies include golfing and fishing.



30 Scott Mathews Defense/Goalie Freshman 6-1 185 lbs. Sprayberry
Scott is a natural leader and has a lot of integrity. He showed ability to cover opponents well and play sound position playing close defense. He will add depth as a close defender and possibly be used in extreme emergencies as a goalie. He earned Most Improved Player two years in a row at Sprayberry HS. Scott is a car salesman in his off time and enjoys playing the guitar.



2009 KSU Club Lacrosse Player Biographies

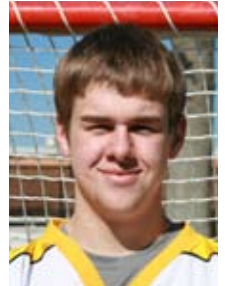


31 Manny Savas Attack Freshman 6-0 175 lbs. Wheeler

Manny is a player that will help propel the Owls offense in 2009. As a four starter for Wheeler HS he led the team in scoring in 2008. Manny has great dodging ability, sees the field well and is an accurate shooter when he gets around the goal. He is also expected to play on the man up unit for KSU this spring. Manny enjoys music and most sports especially hockey.

32 Elliot Mitchell Midfield Freshman 5-11 165. Kell

Elliot has a tremendous love for the sport of lacrosse. He is a midfielder that will add depth to the Owl midfield and be a key to the future teams at KSU. Elliot is a quick, athletic player that demonstrates outstanding sportsmanship. At Kell HS he was awarded the Most Improved Player in 2008. His involvement in team projects off the field exhibits his dedicated commitment and leadership qualities.



33 Zach Harrell Defense Freshman 5-11 175 lbs. Starrs Mill

Zach is looking forward to his first season as a collegiate lacrosse player. He is a smart positional defender that will help relive the starters this season. Zach has played for Starrs Mill HS and has a blue collar attitude about improving his skills this spring. His hobbies include watching football and exercising to stay in shape.



Jim Nassur #1
rifles a shot
towards the goal.

Photo by Dave Adams

Nuggs' hopes to be a
rallying point for the
team this season.

Photo by Kelly Byers



2009 KSU Club Lacrosse Volunteer Biographies



Ken Byers - Head Coach

Building a successful and competitive collegiate program is no easy task. Coach Byers has the background and experience to accomplish both. His KSU career record is 21-18 and he has coached five All Southeastern Conference players. Before his tenure at KSU, Ken started the program at Etowah High School. During that time, Etowah compiled a record of 45-22 and became an elite team in the North Georgia Lacrosse League. He was an assistant coach at Roswell HS from 1999-2001, earning a public HS Championship in 1999. From 1982-2002 he was a player/coach for the Atlanta Lacrosse Club. He produced an overall team record of 307 wins and 104 losses. During that time the ALC earned numerous league titles and tournament championships. He was recognized in 1992 as "Coach of the Year" by the Southeastern Lacrosse League. From 1991-1996 he participated as an Editorial Board member for Lacrosse Magazine. He played lacrosse for national junior college powerhouse Suffolk Community College on Long Island and then finished collegiate career as a defenseman at Kutztown State in Pennsylvania. Ken still plays competitive lacrosse in national tournaments at the masters and grand masters level. Coach Byers is a member of the Positive Coaching Alliance and has been a certified lacrosse official. Recently, he earned his level one and level two coaching certification from US Lacrosse. On January 28, 2007 Coach Byers was inducted into the Georgia Lacrosse Hall of Fame for his outstanding accomplishments to the sport of lacrosse in the state of Georgia. Ken has served the citizens of Atlanta, Georgia for the past twenty seven years with the Atlanta Fire Rescue Department. He has achieved the rank of Battalion Chief working out of the busy downtown area of Atlanta. He is married to his wife Kelly and they have two children, Jennifer and Bryan.

Mark Stopher - Assistant Coach

Coach Stopher will return to the KSU sidelines for 2009 and be assigned the defensive responsibilities for the Owls. Mark grew up an All-County player for Jamesville DeWitt High School in New York. He attended Syracuse University playing close defense from 1986 to 1989. He earned All-American honors 1988 and 1989. In those same years, Mark won the Division 1 National Championship for the Orangemen with teammates Gary and Paul Gait. He currently is a member of the Atlanta Lacrosse Club. His wife Brenda works in the Athletic Department at Kennesaw State University. They have two children, Brianna 7 and Zachery 5.



Michael Tomasello - Team Trainer

Doctor Tomasello returns to KSU for his second tour of duty in 2008. The Owls are extremely fortunate to have a person of his caliber to render treatment when injuries occur. Michael grew up in playing lacrosse in Connecticut earning two Coaches Awards at Westhill High School. He played midfield at the University of Massachusetts from 1982 to 1986. He has his own chiropractic practice in Kennesaw and works at Life Chiropractic College in Marietta. He is married and has six children.

Jamie Durio - Manager

Jaime has plenty of experience as a manager with Lassiter HS, 2003-2005. He is very knowledgeable about the game and is 110 percent dedicated to the KSU program. Since 2006, he has attended every game at home and travels on the road with the team. KSU is very blessed to have a manager with the commitment of Jamie.



2008 KSU Club Lacrosse Season Review

The Kennesaw State University Club Lacrosse team concluded its third season finishing with 5 wins and 8 losses. This was the Owls second full season competing within Southeastern Lacrosse Conference "B" Division. The 2008 schedule loaded up with eight top twenty-five MCLA teams and took its toll on a young, inexperienced squad.

The team played hard in all its games but a very competitive SELC conference realignment made the challenge tough on many occasions. The Owls lacked senior leadership last year and played many young freshmen. This should help with the development of future squads. Early in the season weather affected the schedule and hampered the Owls efforts on occasion. Games with Coastal Carolina and St. Thomas were stopped midway into the contests. Both of these games resulted in losses before the Owls could attempt a comeback.

Throughout the season the team played with great enthusiasm and effort. There were two games that were very memorable from the 2008 season. The Eckerd College game was played on the soccer field last season. It was a classic lacrosse battle against the Tritons with the Owls coming up one goal short. The other game to remember was the nail biter against Furman University during the last weekend of play. The Owls pulled this game out 13-12 to keep their 2008 playoff hopes alive.

Four Kennesaw State players earned honors within the SELC for their on field efforts. Defenseman Zach Statham earned Second Team honors with his outstanding play during the campaign in 2008. He was also recognized as KSU's first All-American Scholar Athlete. Sophomore midfielder Charles Roland earned Honorable Mention for his contribution from his midfield spot. Owl goalie Kyle Hansen was named Honorable Mention for his net minding abilities. Finally, freshman attack man Scott Schulze had a terrific 2008 season. He tallied 22 goals and 13 assists against opponents in the SELC. His efforts did not go unnoticed by league coaches. Schulze was chosen 2008 SELC "Rookie of the Year." All four players return for the Kennesaw State Owls in 2009.

Although the 2008 season was not as successful on the field as Head Coach Ken Byers anticipated, the team did achieve a vast amount of off field recognition from Kennesaw State University itself. The Owls lacrosse program won the inaugural KSU "Best Collegiate Sports Club" trophy. The team was chosen among 14 other club sport teams on campus. The team was very surprised and excited to be chosen the first recipient of the University's prestigious award. Team President Zach Statham received the "Excellence in Leadership" award for being a role model for students managing a club

organization. Head Coach Ken Byers completed the lacrosse team's sweep of awards by being recognized as the "Most Outstanding Coach" at Kennesaw State in 2008. Despite the teams on field record in 2008, these awards proved that the program continues to be headed in the right direction.

The Kennesaw State Owls are very excited about the experienced players returning for 2009. Head Coach Ken Byers advised, "I want to win right now but my vision is what we are building for future years. It is still my intention to give our players the best experience playing competitive collegiate lacrosse that we can and represent the university in a positive light."

The Kennesaw State Owls have been a competitive team and will continue to do so. They have their sights set on a playoff spot and the possibility of a championship in the SELC. With more experienced players coming to KSU to play lacrosse and get an education, the coaches are excited. A lot of things have gone right for the Kennesaw State Lacrosse Team in the past three years and the future is more promising than ever. The Owl players and coaches would like to thank our loyal and dedicated fans for their undying support during the 2008 season.

Tim Minick #24 fakes out his defender and heads to the goal.
Photo by Dave Adams



KSU Club Lacrosse Records and Awards

Individual Records

Goals Scored, Game	6 - JD Douthit vs. Citadel, 2007 6 - Robert Witt vs. UTC, 2006 6 - Robert Witt vs. Tennessee, 2006
Goals, Season	42 - Robert Witt, 2006
Assists, Game	6-JD Douthit vs. Western Carolina, 2006
Assists, Season	32 - JD Douthit, 2006
Points, Game	9 - JD Douthit vs. Furman, 2006 (5g/4a)
Points, Season	64 - JD Douthit, 2006 (32g/32a)
Saves, Game	20-Kyle Hansen vs. Tenn. Wesleyan, 2008
Saves, Season	116 - Kyle Hansen, 2007 (14 games)
Ground Balls, Season	50 - Charles Roland, 2007

Team Awards

Offensive MVP	2008 - Scott Schulze 2007 - JD Douthit 2006 - JD Douthit
Defensive MVP	2008 - Zach Statham 2007 - Kyle Hansen 2006 - Mohamad Said
Most Improved Player	2008 - Tim Minick 2007 - Brett Davies 2006 - Tyler Davis
Coaches Award of Excellence	2008 - Alex Herrmann & Charles Roland 2007 - Robert Witt & Zach Statham 2006 - Alex Beasley & Anthony Grazanti
Rookie of the Year	2008 - James Nassur 2007 - Matt Byrne
Scholastic All American	2008 - Zach Statham

Team Records

Most Goals, Game	21 - Georgia Southern, 2008
Most Goals Allowed, Game	24-Emory University, 2007
Biggest Win	16 - Georgia Southern, 21-5, 2008 16 - University of Alabama, 18-2, 2007
Worst Loss	17-University of South Carolina, 20-3, 2007
Number of Shutouts	1 - Alabama, 15-0, 2006
Longest Win Streak	4 games, 2006
Longest Losing Streak	4 games, 2008

Former Players

Andreas Arprian - 2006	Craig Holman - 2007
Sean Barsin - 2006-08	Rory Keown - 2008
Wes Bass - 2007-08	Matt Kleist - 2006
Wills Beadle - 2006	Ian Lehrer - 2007
Alex Beasley - 2006	Jordan Lolley - 2008
Chris Bruner - 2006	Mike Micelli - 2008
Tanner Bruton - 2006-08	Garrett Moll - 2007-08
Gary Cason - 2007	Steven Orebaugh - 2006
Justin Claxton - 2006	Steven Sandoval - 2007
Brett Davies - 2006-07	Anthony Scrimo - 2006
Tyler Davis - 2006	Ry Skinner - 2008
Jeremy Douthit - 2006-07	Tyler Therrell - 2007
Alex Drake - 2006-07	Joseph Tofani - 2008
Matt Ellington - 2006	Robert Witt - 2006-08
Glenn Farakesh - 2007	
Justin Ferna - 2006-08	
Anthony Grazanti - 2007	
Marcus Haverhals - 2007-08	
Nathan Heffley - 2006	
AJ Henderson - 2006	

Former Coaches

Jerry Douthit - 2006-07
Bill Seitz- 2008
Joe Tarogowski - 2006



Coach Byers gathers the team together before a game starts.

Photo by Dave Admas

2009 KSU Club Lacrosse Owls in Action



Matt Bryne #17 clears the ball to a cutting middle.
Photo by Dave Adams



Justn Mckay #19 sees an opening on the crease.
Photo by Dave Adams



Tyler Schramper #20 splits 3 defenders while clearing the ball.
Photo by Dave Adams



Elliot Mitchell #32 spin dodges his defender and breaks away.
Photo by Dave Adams



Scott Hearn #14 attacks the goal and keeps the ball close.
Photo by Dave Adams



Isom White #6 charges down the field while keeping the ball safe.
Photo by Dave Adams



ATLANTA FIRE RESCUE
wishes the
KSU Club Lacrosse Owls
Good Luck in the 2009 Season



"ATLANTA'S BRAVEST"

Engine 15 Truck 15 Battalion 3



Scott Schulze #21
breaks down and
gets ready to dodge.
Photo by Dave Adams

Chris Lanquist #11
takes a shot in traffic.
Photo by Dave Adams



Invest in Your Spine Now!

*It will Pay Healthy Dividends
for the Rest of Your Life.*



Chiropractic is perfect for children and adults. It **WILL** make a difference in your health!



Dr. Lydia Dever
Gonstead Chiropractor



Dr. Michael Tomasello
Gonstead Chiropractor

We have great success in removing nerve pressure that may be related to:

- Numbness and Tingling
 - Sciatica
 - Back pain
- Ear infections
- Headaches
- Low energy



The Gold Standard in Chiropractic



678.290.3263

3903 Jiles Road • Kennesaw, GA 30144

www.hoopinsocker.com

Next to Legacy Park entrance



3126 Cobb Parkway NW
Kennesaw, GA 30152
678-574-7227

Call to Sign up for Leagues beginning March 1 for all age brackets!



**Game On! Sports is your new Indoor Lacrosse facility in NW Atlanta, located at:
3126 Cobb Pkwy, Kennesaw, GA 30152**

The Facility is fully climate controlled, well lit, and entirely enclosed in a modified hockey rink for fast, continuous play!

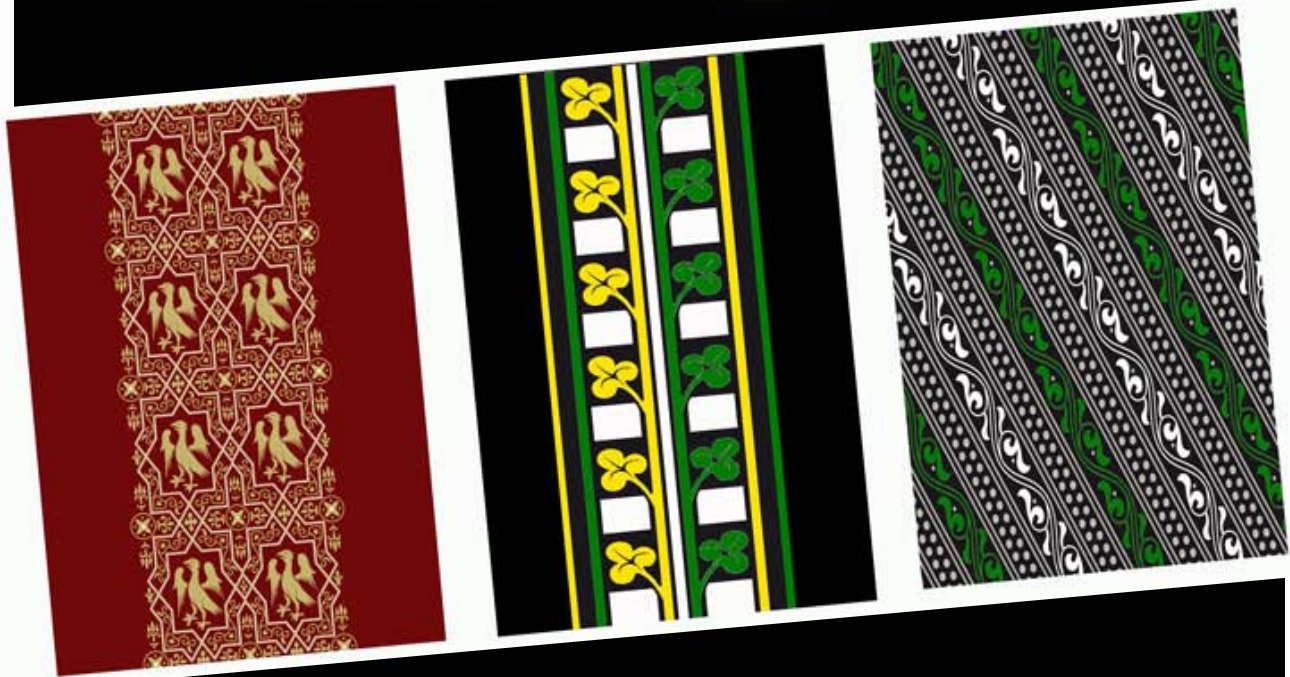
In-Line Roller Hockey leagues are signing up now as well and are played in a modified hockey rink with Sport Court while other sports including Soccer, Flag Football, and Floor Hockey are played in the same rink on padded Astro-Turf.

Bring your Best Game to Game On! Sports!

Call for more information for Yoga, Pilates and Boot Camps led by certified instructors,
As well as Position Clinics, Birthdays and Rental Rates.

PROUD SPONSOR OF KSU LACROSSE

SUMMER



2009

DETAILS: www.breakawaylacrosse.com



Address

920 Woodstock Road
Suite 240
Roswell, GA 30075
770-640-1200
770-640-1222 Fax

Hours of Operation

Mon. - Fri. 11:00am to 7:00pm
Sat. 11:00am to 5:00pm
Sun. 12:00pm to 4:00pm

Directions From GA 400

- Exit Holcomb Bridge Rd. going west to Roswell (Hwy. 92)
- Continue on Holcomb Bridge Road about 4.5 miles. The road will change names first to Crossville Road and then to Woodstock Road as you pass the King Road intersection.
- Home Depot will be on the left and at the next traffic light turn left at West Wind Blvd.
- Make your first right into the shopping center behind The Integrity Bank.



ALL THE GEAR. ALL THE TIME.

www.laxworld-atlanta.com

770-640-1200



2009 KSU Club Lacrosse Schedule

DATE	DAY	TIME	OPPONENT	LOCATION
Jan. 31	Sat.	3 PM	MTSU	KSU - Intramural Field
Feb. 7	Sat.	4 PM	UNC - Greensboro	KSU - Intramural Field
Feb. 8	Sun.	2 PM	Mercer	KSU - Intramural Field
Feb. 15	Sun.	2 PM	Georgia Southern	KSU - Intramural Field
Feb. 21	Sat.	2 PM	Georgia State*	KSU - Intramural Field
Feb. 22	Sun.	2 PM	UT - Chattanooga	Chattanooga, TN
Feb. 28	Sat.	2 PM	Furman*	Greenville, SC
Mar. 1	Sun.	1 PM	High Point	Greenville, SC
Mar. 7	Sat.	3 PM	Alabama*	KSU - Intramural Field
Mar. 22	Sun.	4 PM	SCAD	KSU - Intramural Field
Mar. 28	Sat.	1 PM	Eckerd	St. Petersburg, FL
Mar. 29	Sun.	11 AM	North Florida	Jacksonville, FL
Apr. 4	Sat.	2 PM	Tennessee Wesleyan*	Athens, TN
Apr. 10	Fri.	7 PM	Emory*	Atlanta, GA
Apr. 18-22	Fri.-Sun.	All Day	SELC Championship	Northview HS Duluth, GA

* Denotes Divisional Game

www.ksulax.com