



Kyle Hansen
2008 Team Captain

**KENNESAW STATE
LACROSSE CLUB**



2008 INFORMATION AND MEDIA GUIDE
WWW.KSULAX.COM



Robert Witt
2007 SELE Division B
All-Conference Team

2008 KSU Club Lacrosse General Information

Lacrosse Quick Facts

Name: Kennesaw State University
 Location: Kennesaw, Georgia
 Founded: 1963
 Enrollment: 18,500
 Nickname: Fighting Owls
 Colors: Black and Gold
 Field Surface: Grass
 Affiliation: MCLA Division 2
 Conference: SELC
 Official Website: www.ksulax.com
 University President: Dr. Dan Papp
 Club Sports Director: Laura St. Onge
 Head Coach: Ken Byers
 Team Physician: Mark Tomasello
 Team President: Zach Statham
 Team Captain: Kyle Hansen
 Team Captain: Matt Bryne

DATE	DAY	TIME	OPPONENT	LOCATION
Feb. 2	Sat.	1 PM CST	Alabama*	Tuscaloosa, AL
Feb. 10	Sun.	11 AM	Elon	KSU - Intramural Field
Feb. 17	Sun.	2 PM	Coastal Carolina	KSU - Intramural Field
Feb. 18	Mon.	8 AM	St. Thomas, MN.	KSU - Intramural Field
Feb. 23	Sat.	4 PM	SCAD	Savannah, GA
Feb. 24	Sun.	12 PM	Georgia Southern	Statesboro, GA
Mar. 1	Sat.	4 PM	Eckerd	KSU - Soccer Field
Mar. 16	Sun.	2 PM	GCSU	Milledgeville, GA
Mar. 21	Fri.	8 PM	Emory*	Atlanta, GA
Mar. 29	Sat.	2 PM	UNC - Charlotte	Charlotte, NC
Mar. 30	Sun.	12 PM	High Point	High Point, NC
Apr. 5	Sat.	2 PM	Furman*	KSU - Intramural Field
Apr. 6	Sun.	2 PM	Tenn. Wesleyan*	KSU - Intramural Field
Apr. 18-22	Fri.-Sun.	All Day	SELC Championship	Northview HS Duluth, GA

* Denotes Divisional Game

Kennesaw State University proudly supports the following collegiate club sports:

KSU Co-ed Cheer Club

KSU Power Lifting Club

KSU Roller Hockey Club

KSU Rugby Club

KSU Ultimate Frisbee Club

KSU Wakeboard Club

KSU Cricket Club

KSU Cycling Club

KSU Ice Hockey Club

KSU Men's Lacrosse Club

KSU Women's Lacrosse Club

KSU Wrestling Club



Kennesaw State University
 Collegiate Club Sports
 1000 Chastain Road
 Kennesaw, GA. 30144
 Mail Drop 0302
 Recreation Center Building
 Room 204; Bldg 3
 Phone 678. 797. 2263

2008 KSU Club Lacrosse Season Preview

Overview

The Kennesaw State Owls enter the 2008 club lacrosse season with more experienced players than last year, an improved coaching staff, and a real opportunity to advance in to the Southeastern Lacrosse Conference playoffs. In 2007 KSU finished Lax Power's MCLA Division 2 ranking, 26 out of 94 teams and also played the third toughest schedule nationally. Realignment within the league will give the Owls a chance for a playoff position. The divisional competition will be tough against SELC champion Emory University, University of Alabama, Furman University, and the league newcomer Tennessee Wesleyan. Kennesaw State has improved its number and quality of players with a full fledged recruiting effort during 2007. Many of these recruits will be given the opportunity to contribute this spring and will be the basis of many talented teams in future years. Only time will tell how high the KSU Owls will fly this season.

Attack

Kennesaw State's attack unit will be going through reorganization this season. They should be able to control the tempo of the offense and put the ball in the cage. Leading the attackmen will be sharp shooter TIM MINICK responsible for 17 goals and an assist in 2007. Complementing him will be a host of recruited freshmen. Slick stick handlers include BRIAN BROE, JORDAN LOLLEY, COLIN O'REILLY, and the highly touted SCOTT SCHULZE. These players are good athletes and should add some scoring punch. The success of the offense will rest with the production of the attack. Big numbers are expected when the attack gels and gets clicking with the midfielders.

Midfield

The Owls midfield is still one part of the team that has sufficient depth and experience to compete with any team in the league. Headlining the midfield will be SELC first team player, senior ROBERT WITT. His 25 goals and 7 assists were big numbers in 2007 and he will be kept on the field as much as possible. Hard running CHARLES ROLAND had a terrific year as a freshman and will be teamed with the consistent ALEX HERRMANN. The second line has many veterans returning. They are expected to produce offensively much like the first line. Third year players SEAN BARSIN and JUSTIN FERNA are teamed with the speedy ISOM WHITE to be productive. The third line should be improved with the quality of athletes now playing for the Owls. Freshman RY SKINNER will play along side the crafty and always dangerous veteran TANNER BRUTON. Other midfielders that will help KSU include MARCUS HAVERHALS, JIM NASSUR, JON SLUTZKY, JUSTIN MCKAY, MIKE MICELI, and WILL KANTSIOS. Nothing is certain, but the depth of midfielders that the Owls possess should help their run for a playoff spot.

Defense

Kennesaw State University returns many of their talented defenders for the 2008 season. In goal, "Defensive MVP" in 2007, KYLE HANSEN is back to guard the cage and stop opponents' shots. His backups include WES BASS and promising freshman WEAVER BEARDEN. All-SELC candidate MOHAMAD SAID returns to close defense. He is a tough, intense defender with great takeaway ability. MATT BYRNE gained valuable experience last year and will be teamed with a new creaseman RORY KEOWN. The very versatile WEAVER BEARDEN will be used in all spots on the defensive side of the field this season. COREY REITZ, DAN BITTINGER, and JOE TOFANI will supplement the backline and relieve the starters when needed. The long stick midfield duties fall on the very talented ZACH STATHAM. This defensive unit will keep the score low and make opponents pay for any goals scored this season.

Coaching Corner

Head Coach KEN BYERS made a concerted effort recruiting in 2007. He improved the number of quality players coming to KSU this spring. Byers advised, "We are getting better everyday. Today's recruits will be the mainstay of the program tomorrow." The team will also benefit from newly recruited assistant coaches MARK STOPHER and BILL SEITZ. The overall program is well ahead of schedule and a playoff spot is well within reach this season. Ms. LAURA ST. ONGE has been hired as the Club Sports Director at KSU and the team continues to enjoy the support University President, DR. PAPP shows for club sports here at KSU. The Kennesaw State club lacrosse program is based on a "student first, athlete second" philosophy and the team strictly enforces this policy. Everything is in place for the Kennesaw State University Owl Lacrosse Club to continue the success of the past two seasons.



Captain Matt Byrne #17 and Captain Kyle Hansen #22 look forward to leading the Owls to a successful 2008 season.

2008 KSU Club Lacrosse Team Roster

Numerical

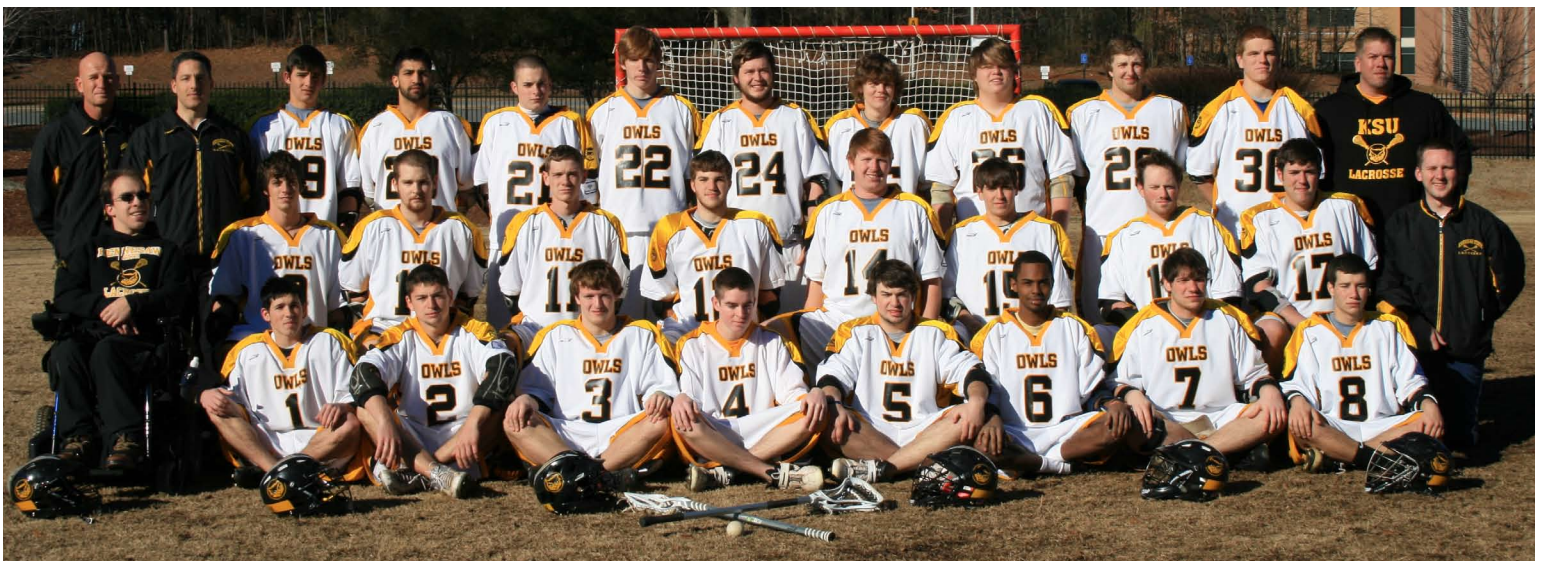
#	Name	Position	Height	Weight	High School	Year
1	Jim Nassur	Midfield	5' 8"	135 lbs.	Kell	Freshman
2	Charles Roland	Midfield	6' 0"	195 lbs.	Etowah	Sophomore
3	Alex Herrmann	Midfield	5' 11"	185 lbs.	Starr's Mill	Freshman
4	Brian Broe	Attack	5' 10"	160 lbs.	Sprayberry	Freshman
5	Wes Bass	Goal/Def.	5' 10"	190 lbs.	Harrison	Sophomore
6	Isom White	Midfield	6' 0"	145 lbs.	McEachern	Sophomore
7	Justin Ferna	Midfield	6' 0"	215 lbs.	Kennesaw Mountain	Senior
8	Will Kantsios	Midfield	5' 8"	160 lbs.	North Springs	Freshman
9	Jordan Lolley	Att/Mid	5' 10"	175 lbs.	Kell	Freshman
10	Joseph Tofani	Defense	5' 11"	200 lbs.	Kennesaw Mountain	Freshman
11	Ry Skinner	Midfield	6' 0"	150 lbs.	Newnan	Freshman
12	Marcus Haverhals	Midfield	5' 11"	160 lbs.	East Coweta	Sophomore
13	Sean Barsin	Midfield	5' 11"	160 lbs.	Sprayberry	Junior
14	Robert Witt	Midfield	6' 3"	225 lbs.	Walton	Senior
15	Jonny Slutzky	Attack	5' 11"	165 lbs.	Wheeler	Freshman
16	Tanner Bruton	Midfield	5' 9"	190 lbs.	Pope	Junior
17	Matt Byrne	Defense	6' 1"	215 lbs.	Blessed Trinity	Senior
18	Colin O'Reilly	Attack	6' 0"	165 lbs.	Harrison	Sophomore
19	Justin McKay	Midfield	5' 11"	168 lbs.	South Forsyth	Freshman
20	Mohamad Said	Defense	5' 11"	190 lbs.	Kell	Junior
21	Scott Schulze	Attack	5' 8"	160 lbs.	Northview	Freshman
22	Kyle Hansen	Goalie	6' 1"	180 lbs.	Roswell/McCallie	Junior
23	Michael Miceli	Midfield	5' 8"	165 lbs.	Kennesaw Mountain	Freshman
24	Tim Minick	Att/Mid.	6' 0"	220 lbs.	Kennesaw Mountain	Sophomore
25	Corey Reitz	Mid/Def.	5' 10"	155 lbs.	Sprayberry	Freshman
26	Rory Keown	Defense	6' 0"	260 lbs.	Newnan	Freshman
27	Dan Bitteringer	Defense	6' 1"	215 lbs.	Pope	Sophomore
29	Zach Statham	Defense	6' 0"	180 lbs.	Kell	Junior
30	Weaver Bearden	Goal/Def.	6' 1"	190 lbs.	Sprayberry	Sophomore

Alphabetical

#	Name
13	Barsin, Sean
5	Bass, Wes
30	Bearden, Weaver
27	Bitteringer, Dan
4	Broe, Brian
16	Bruton, Tanner
17	Byrne, Matt
7	Ferna, Justin
22	Hansen, Kyle
12	Haverhals, Marcus
3	Herrmann, Alex
8	Kantsios, Will
26	Keown, Rory
9	Lolley, Jordan
19	McKay, Justin
23	Miceli, Michael
24	Minick, Tim
1	Nassur, Jim
18	O'Reilly, Colin
25	Reitz, Corey
2	Roland, Charles
20	Said, Mohamad
21	Schulze, Scott
11	Skinner, Ry
15	Slutzky, Jonny
29	Statham, Zach
10	Tofani, Joseph
6	White, Isom
14	Witt, Robert

Head Coach Ken Byers **Assistant Coach** Bill Seitz **Manager** Jamie Durio
Assistant Coach Mark Stopher **Team Physician** Michael Tomasello **Publicist** Michael McCabe

2008 KSU Owls Club Lacrosse Team Photo



2008 KSU Club Lacrosse Player Biographies

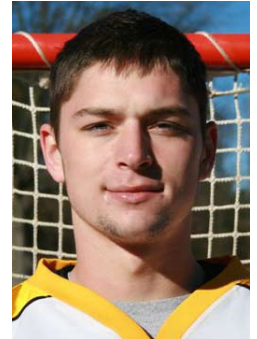


1 Jimmy Nassur Midfield Freshman 5-8 135 lbs. Kell

Jim is a transfer student from Georgia Southern University. He is looking forward to his first year of competitive collegiate lacrosse with the Owls. The plan is to use him primarily as a utility midfielder. He has good stick skills, is a tireless worker and is athletic. In his spare time Jim enjoys golfing and going to hockey games.

2 Charles Roland Midfield Sophomore 6-0 195 lbs. Etowah

Charles made a positive impression in his first season of collegiate lacrosse picking up a team high 50 ground balls and producing 10 goals and 2 assists. Charles was very versatile last season playing on the first midfield, man up, man down and winning 50% of his face offs for the Owls. Charles earned a North Georgia Lacrosse League Championship playing for Etowah in 2006 along with NGLL honors in 2005 and 2006. He also earned the Etowah "Coaches Award" in 2005 for his dedicated and tireless work ethic.



3 Alex Herrmann Midfield Freshman 5-11 185 lbs. Starrs Mill

Alex is a steady, hardworking and intelligent player. He produced a terrific fall season and impressed the coaches with his work ethic and effort. He is expected to contribute to the offensive production of the KSU midfield. He plays solid positional defense and is quick on ground balls. Alex is an Eagle Scout and holds a black belt in martial arts.

4 Brian Broe Attack Freshman 5-10 160 lbs. Sprayberry

Brian is looking forward to playing lacrosse at the next level. He comes to KSU after four years of varsity experience at Sprayberry HS and was voted "Best Attackman" in 2007. Brian had a solid fall season and is willing to work hard this spring. He enjoys all types of sports in his off time.



5 Wes Bass Goalie/Defense Junior 5-10 190 lbs. Harrison

Wes was a very versatile utility player for the Owls in 2007. He had 7 goals from his attack position and made 21 saves on the 41 shots he faced in the cage as a goalie. Wes understands the game extremely well. He will be used to supplement the defensive corps and share time in goal during the 2008 campaign. Wes was an All-State selection in 2004 and 2005. He enjoys hockey and playing disc golf.

6 Isom White Midfield Sophomore 6-0 145 lbs. McEachern

Isom is a very quick midfielder that plays tough defense on opponents. He has an excellent attitude and will be counted on heavily from his spot on the KSU midfield. Isom has the ability to go both ways when shooting on the goal and is excellent on ground balls. Isom has a tremendous personality and always shows outstanding character when the chips are down. He was the team captain at McEachern HS in 2006.



2008 KSU Club Lacrosse Player Biographies

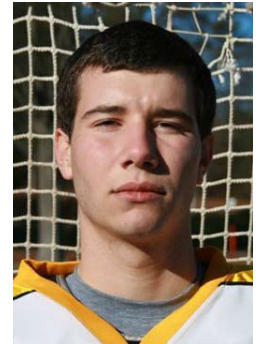


7 Justin Ferna Midfield Senior 6-0 205 lbs. Kennesaw Mountain

Justin will be playing his third and final season for the Owls in 2008. He added 5 goals and an assist in 2007. He is a dedicated team leader and adds a lot of humor to the team, especially on the away trips. Last year Justin was successful on face-offs winning 22 of 36. He will be used in that capacity this season. His hobbies are weight training, music and physical conditioning.

8 Will Kantsios Midfield Freshman 5-8 160 lbs. North Springs

Will is a freshman that will be the foundation of KSU's lacrosse future. He has a great attitude and will add depth to the KSU midfield. Will was team captain at North Springs. He was voted "Most Improved Player" in 2006 and "MVP" in 2007. In his off time he enjoys staying in shape by weightlifting.



9 Jordan Lolley Attack Freshman 5-10 175 lbs. Kell

Jordan is a left handed attackman that will add depth to the Owls attack unit this season. He is a quick learner and an extremely dedicated player with four years of experience from Kell HS. He sees the field well and will be counted on to improve the offensive output for KSU. Jordan enjoys fishing and is a member of Kappa Sigma fraternity.

10 Joseph Tofani Defense Freshman 5-11 200 lbs. Kennesaw Mountain

Joe is a natural athlete that is learning to adjust to lacrosse at the college level. During the fall he showed ability to cover well at close defense. He will mature into a fine player after gaining experience this season. He is energetic and a quick learner. His hobbies include hockey and playing the drums.



11 Ry Skinner Midfield Freshman 6-0 150 lbs. Newnan

Ry showed outstanding potential and excellent ability during the fall. He is a three time All League player from the North Georgia Lacrosse League. He is a tough defender who has speed, tenacity and a great field sense. Ry will be a great player and has a very promising future with the Owls.

12 Marcus Haverhals Midfield Sophomore 5-11 160 lbs. East Coweta

Marcus gained valuable experience playing midfield last season. He possesses good athletic ability and works extremely hard all the time. He holds the office of team treasurer and likes to be considered the team's "Rudy." Marcus is another product of the North Georgia Lacrosse League playing collegiate lacrosse. His hobbies include snowboarding and skydiving.



2008 KSU Club Lacrosse Player Biographies

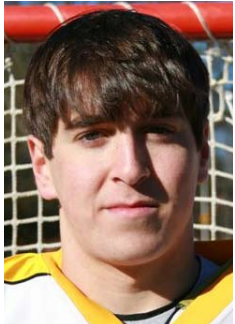
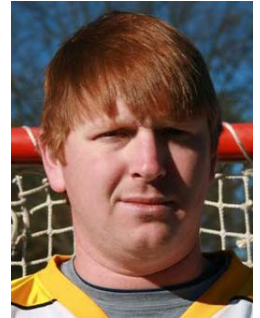


13 Sean Barsin Midfield Junior 5-11 160 lbs. Sprayberry

Sean is playing his third season for the Owls after posting 6 goals, 2 assists and 32 ground balls in 2007. He is an intense player that has tremendous desire to succeed. This season the Owls will count on him to play on the man down unit and continue his solid midfield play. During his HS career Sean earned "Offensive MVP" three times and "Team MVP" twice. Sean is expected to up his scoring output this season and continue to be a team leader. He is a personal trainer and an outstanding ping pong player.

14 Robert Witt Attack Senior 6-3 225 lbs. Walton

Robert was the selected First Team All Southeastern Lacrosse Conference for his outstanding play at midfield in 2007. Rob notched 25 goals, added 7 assists and picked up 25 GB's last spring. In 2006 he posted 49 points (42g/7a) for the Owls. Rob transferred to KSU after playing a season under legendary Coach Hank Janczyk at Gettysburg College in Pennsylvania. He earned KSU's 2007 coach's "Award of Excellence" for his outstanding dedication and tireless work ethic. In his spare time Robert coaches youth players with Bagataway Lacrosse.



15 Jon Slutzky Attack Freshman 5-11 165 lbs. Wheeler

Jonny will add a great deal to Kennesaw's attack or midfield unit this year. At Wheeler HS he was a three year starter. Jonny has a gift of seeing the field well and finding the open man. He possesses great quickness, finishes well and will be a superb player for KSU in future seasons. He enjoys working out and staying in great physical shape.

16 Tanner Bruton Midfield Junior 5-9 190 lbs. Pope

Tanner played in every game during the past two seasons for the Owls. He continues to be a very valuable asset due to his versatility and adaptability. Playing midfield or attack Tanner knows the KSU system. He accounted for a goal, 4 assists and 8 ground balls. He is a steady and solid veteran that will be counted on heavily this season. He enjoys horseback riding on the beach, traveling to exotic places and singing love ballads.



17 Matt Byrne Defense Senior 6-1 215 lbs. Blessed Trinity Team Captain

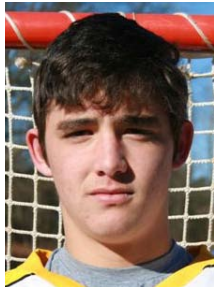
Matt is second year defenseman that performed on a strong defensive unit last season. He is an excellent athlete and a very hard worker. Matt's background as a baseball player at Reinhardt College helped him make the adjustment to his first season playing lacrosse. He earned KSU's "Most Improved Player" Award in 2007 and will contribute this season with his consistent play. Matt enjoys playing guitar, golf and shooting firearms.

18 Colin O'Reilly Attack Sophomore 6-0 165 lbs. Harrison

Colin is a transfer student from the University of Georgia. He is looking forward to his first season of competitive lacrosse and will play attack for the Owls. Colin is a talented player from Harrison HS with solid stick skills and vision. He has the ability to control the offense and make plays from behind the goal. In his spare time he enjoys cycling to stay in shape.



2008 KSU Club Lacrosse Player Biographies



19 Justin McKay Midfield Freshman 5-11 168 lbs. South Forsyth
Justin is a very quick and athletic midfielder. His scoring punch will be a great addition to the KSU offense. He has a positive attitude and is a natural leader. Justin holds the scoring record at South Forsyth HS with 33 goals and 12 assists his senior year. He was named "Team MVP" twice and earned All State honors in 2007. Justin enjoys flag football when he is not playing lacrosse.

20 Mohamad Said Defense Junior 5-11 190 lbs. Kell
Earned KSU's "2006 Defensive MVP" and played an extremely important leadership role for KSU's defense unit in 2007. He's a very quick, strong positional defender that picked up 48 ground balls in 2007. Mohamad will be used primarily as a close defender and can also play long stick midfield. He has great take away ability and is very good at clearing the ball. He always draws the opponent's toughest players. He has enormous potential and will perform at a very high level in the SELC.



21 Scott Schulze Attack Freshman 5-8 160 lbs. Northview
Scott had an impressive fall season and will be counted on heavily to quarterback the KSU offense in 2008. He is deceptively quick and possesses a hard, accurate shot. He has played lacrosse since he was five years old. An outstanding attackman for Northview HS, Scott has demonstrated a unique ability to score goals. He has earned "MVP" recognition from Team Georgia in 2005, 2006 and 2007.

22 Kyle Hansen Goalie Junior 6-1 180 lbs. McCallie School Team Captain
Kyle had an outstanding season in 2007 recording eight wins and six losses. He posted a 53% percent save average on 214 shots and was named KSU's "2007 Defensive MVP." Kyle's leadership was critical to the success of the KSU defensive unit in 2007. He played four years at Roswell HS before finishing at McCallie with a Tennessee High School Championship in 2005. Kyle played collegiate lacrosse for Mars-Hill in North Carolina before transferring to KSU.



23 Michael Miceli Midfield Freshman 5-7 150 lbs. Kennesaw Mountain
Michael is a scrappy player that will be seen hustling up and down on the Owl midfield this season. He has a terrific attitude about lacrosse and is a very hard worker on and off the field. Michael will add depth to the KSU midfield and will become a standout player in future seasons. In his off time he enjoys the outdoors and fishing.

24 Tim Minick Attack Sophomore 5-11 210 lbs. Kennesaw Mountain
Tim had an outstanding first year performing at the college level. He was primarily used as an attackman but saw spot duty on midfield producing 16 goals, an assist and 15 ground balls. He was the Kennesaw Mountain HS "Team MVP" in 2003 and 2004. He is a natural team leader, has a terrific attitude and is very knowledgeable regarding lacrosse. His hobbies include fishing, golf, and wake boarding.

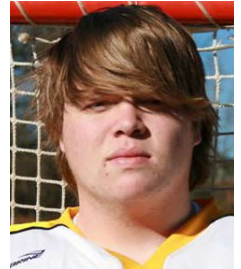


2008 KSU Club Lacrosse Player Biographies



25 Corey Reitz Midfield/Defense Freshman 5-10 155 lbs. Sprayberry
As a first year versatile collegiate athlete, Corey is learning the KSU system. He will be used as a circuit player. He has shown the ability to play midfield, defense and face off. Corey is an energetic hard worker and he loves the sport of lacrosse. He had a terrific career at Sprayberry HS where he won the "Merritt Award" in 2007.

26 Rory Keown Defense Freshman 6-0 260 lbs. Newnan
Rory is another standout product from the North Georgia Lacrosse League. He earned All League honors in 2006 and 2007. He has secured a starting spot on the close defense with his impressive play, determination and leadership during fall ball. He is tough on the crease, possesses good patience clearing the ball and is quick to scoop up a loose ball. He enjoys all types of sports in his off time.



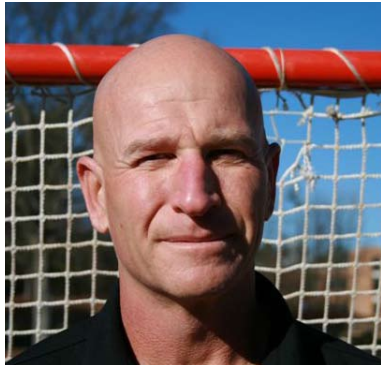
27 Dan Bittering Defense Sophomore 6-1 215 lbs. Pope
Dan is a big, strong and experienced defenseman from Pope HS. He is a good cover man, handles the ball well and makes good decisions. He may be used on the man down unit this season. Dan is looking forward to making a strong contribution to an already strong defensive unit for the Owls.

29 Zach Statham Defense Junior 6-0 160 lbs. Kell
As a long stick midfielder, Zach had a very impressive freshman season picking up 33 groundballs. He is the Team President and has smoothly administered the transition of power from the previous board of officers. Zach has demonstrated a great field sense, quickness and a wide variety of defensive stick checks. He earned "Defensive MVP" at Kell in 2003 and 2005. Zach is an outstanding student/athlete and is dedicated to the success of the KSU lacrosse program on and off the field. He earned the coach's "Award of Excellence" in 2007. His hobbies include golfing and fishing.



30 Weaver Bearden Goalie/Defense Freshman 6-1 190 lbs. Sprayberry
Weaver performed extremely well in the cage against some tough competition during fall ball. His exceptional athletic ability will also enable him to play close defense this spring. Weaver was the team captain, "Defensive MVP", "Team MVP" and "Senior Award" winner at Sprayberry HS. As a member of Pi Kappa Phi fraternity, his hobbies include painting, drawing, and anything artistic.

2008 KSU Club Lacrosse Coach Biographies



Ken Byers - Head Coach

Building a successful and competitive collegiate program is no easy task. Coach Byers has the background and experience to accomplish both. His KSU career record is 16-10 and he has coached two All Southeastern Conference players. Before his tenure at KSU, Ken started the program at Etowah High School. During that time, Etowah compiled a record of 44-24 and became an elite team in the North Georgia Lacrosse League. He was an assistant coach at Roswell HS from 1999-2001, earning a public HS Championship in 1999. From 1982-2002 he was a player/coach for the Atlanta Lacrosse Club. He produced an overall team record of 307 wins and 104 losses. During that time the ALC earned numerous league titles and tournament championships. He was recognized in 1992 as “Coach of the Year” by the Southeastern Lacrosse League. From 1991-1996 he participated as an Editorial Board member for Lacrosse Magazine. He played lacrosse for national junior college powerhouse Suffolk Community College on Long Island and then finished his collegiate career as a defenseman at Kutztown State in Pennsylvania. Ken still plays competitive lacrosse in national tournaments at the masters and grand masters level. Coach Byers is a member of the Positive Coaching Alliance and has been a certified lacrosse official. On January 28, 2007 Coach Byers was inducted into the Georgia Lacrosse Hall of Fame for his outstanding accomplishments to the sport of lacrosse in the state of Georgia. Ken has served the citizens of Atlanta, Georgia for the past twenty six years with the Atlanta Fire Rescue Department. He has achieved the rank of Battalion Chief working out of the busy downtown area of Atlanta. He is married to his wife Kelly and they have two children, Jennifer and Bryan.

Mark Stopher - Assistant Coach

2008 brings a new and improved coaching staff to the KSU sidelines. Mark Stopher will be assigned the defensive responsibilities for the Owls this year. Mark grew up an All-County player for Jamesville DeWitt High School in New York. He attended Syracuse University playing close defense from 1986 to 1989. He earned All-American honors 1988 and 1989. In those same years, Mark won the Division 1 National Championship for the Orangemen with teammates Gary and Paul Gait. He is currently a member of the Atlanta Lacrosse Club. His wife Brenda works in the Athletic Department at Kennesaw State University. They have two children, Brianna 6 and Zachery 4.



Bill Seitz - Assistant Coach

Kennesaw State is very fortunate to have added another quality coach to its staff this season. Coach Seitz is a face off specialist and will work on offensive production for the Owls. Bill grew up in Baltimore, Maryland and attended Cardinal Gibbons High School. He played four years of soccer and lacrosse gaining valuable experience in both sports. He is a graduate and former player from UMBC. A veteran player for the Atlanta Lacrosse Club, Bill was named the 1992 MVP of the Peach State Tournament. Most recently Bill is a coach for the “Red Roosters”, a premier elite traveling team. He is the owner and operator of FACEOFF Lacrosse and was named 2006 “Lacrosse Retailer of the Year”. He has a wife Vicky and a lacrosse playing daughter Whitney.



2008 KSU Club Lacrosse Support Biographies



Michael Tomasello - Team Physician

Doctor Tomasello returns to KSU for his second tour of duty in 2008. The Owls are extremely fortunate to have a person of his caliber to provide treatment when injuries occur. Michael grew up playing lacrosse in Connecticut earning two Coaches Awards at Westhill High School. He played midfield at the University of Massachusetts from 1982 to 1986. He has his own chiropractic practice in Kennesaw and works at Life Chiropractic College in Marietta. He is married and has six children.

Jamie Durio - Manager

Jaime has plenty of experience as a manager with Lassiter HS, 2003-2005. He is very knowledgeable about the game and is 110 percent dedicated to the KSU program. He has attended every game at home and travels on the road with the team. KSU is very blessed to have a manager with the commitment of Jamie.



Michael McCabe - Public Relations

Mike is the last of the original three KSU students that helped establish the lacrosse program. He played the first season in 2006 and may consider playing in the future. He has done a fine job promoting the KSU program on and off campus. He is a high energy person that gets the job done right the first time. Mike has accomplished many tasks and has handled the tough assignments that have made the Owls lacrosse program the outstanding organization that it is today.

FACEOFF LACROSSE

Four Atlanta Locations
Low Price Guarantee
Cash Back Advantage Rewards
Elite Camps



We Are The Premier Lacrosse Retailer In Atlanta

Alpharetta - Marietta - East Cobb - Peachtree City



www.faceofflacrosse.com

2007 KSU Club Lacrosse Season Review

The Kennesaw State University Club Lacrosse team concluded its second season finishing with 8 wins and 6 losses. After going 8 - 4 in 2006, this was the first season that the team competed within the hard fought Southeastern Lacrosse Conference. The team experienced a lot of early season success and then found out how hard it was to compete against long time established programs.

The team had a 6-1 record early in the year before it got a real taste of how talented its SELC divisional rivals are. SELC "B" Champion, Emory University, Eckerd College and Savannah College of Art and Design welcomed the Owls to the league in by hanging divisional losses on the Owls.

The Owls finished with a Lax Power ranking of # 26 in the nation which included a total of 94 schools playing in the MCLA, Division 2. KSU had strength of schedule rated at # 3 in the nation. KSU even took on bigger schools like University of Central Florida, University of South Carolina, and SELC "A" Division Champion, Georgia. Throughout the season the team played with great enthusiasm and effort.

Two players earned honors within the SELC for their on field efforts. Junior midfielder ROBERT WITT earned First Team honors with his outstanding play during the campaign in 2007. His 25 goals and 7 assists helped the Owls on the offensive side of the field. Junior attack man JEREMY DOUTHIT earned Honorable Mention for his contribution from his attack spot. Douthit's 33 goals and 27 assists led the KSU squad in scoring.

Many other players had excellent seasons for the Owls. MKYLE HANSON was a sturdy and experienced goalie for the program throughout the season. Long stick defender ZACH STATHAM proved he could cover the best players in the SELC successfully. Close defender MOHAMAD SAID showed his speed and desire for the ground ball all season long. Many of these players return next season for the Kennesaw State Owls.

The Owls were nominated for several awards given out by KSU for clubs on campus. The club received a "Certificate of Excellence" in all four of the nominated categories. They included "New RSO" and "Outstanding RSO Website." BRETT DAVIES was recognized for his "Outstanding Membership" and Coach KEN BYERS was recognized as an "Outstanding RSO Advisor." For a new club to be recognized for that many awards was unprecedented and very surprising. Those recognitions helped to validate all the hard work that had gone into the program in its first year and a half.

The 2007 season closes out the career of team President, BRETT DAVIES. A two year starter for the Owls, Davies will be sorely missed not only for his game day effort but for his devotion as administrator for the program. New President, ZACH STATHAM has many new ideas and plans for the team. He inherits a slate of teammates that will make this program bigger and better for years to come.

With two successful seasons under their belt, the Kennesaw State Owls have a reason to think the sky is the limit. Coach Byers dedicates his time and experience to the program because "It is my intention to give our players the best experience playing competitive collegiate lacrosse that we can and represent the university in a positive light." University President DANIEL PAPP has embraced the team and allowed them to play a game on the school's NCAA soccer field. LAURA ST. ONGE has been hired as a new Club Sports Director. She will help coordinate certain activities with the club.

With more experienced players coming to KSU to play lacrosse and get an education the coaches are happy. A lot of things have gone right for the Kennesaw State lacrosse team in the past two years and the future is more promising than ever. The Owl players and coaches would like to thank our loyal and dedicated fans for their undying support during the 2007 season. They promise another exciting season of lacrosse in 2008. See you on the field!



Zach Statham #11 keeps his eyes on his attackman.

Photo by Dave Adams

KSU Club Lacrosse Records and Awards

Individual Records

Goals Scored, Game	6-JD Douthit vs. Citadel, 2007 6-Robert Witt vs. UTC, 2006 6-Robert Witt vs. Tennessee, 2006
Goals, Season	42-Robert Witt, 2006
Assists, Game	6-JD Douthit vs. Western Carolina, 2006
Assists, Season	32-JD Douthit, 2006
Points, Game	9-JD Douthit vs. Furman, 2006 (5g/4a)
Points, Season	64-JD Douthit, 2006 (32g/32a)
Saves, Game	16-Wills Beadle vs. Emory, 2006
Saves, Season	116-Kyle Hansen, 2007 (14 games)
Ground Balls, Season	50-Charles Roland, 2007

Team Awards

Offensive MVP	2007-JD Douthit 2006-JD Douthit
Defensive MVP	2007-Kyle Hansen 2006-Mohamad Said
Most Improved Player	2007-Brett Davies 2006-Tyler Davis
Coaches Award of Excellence	2007-Robert Witt & Zach Statham 2006-Alex Beasley & Anthony Grazanti
Best New Player Award	2007-Matt Byrne

Team Records

Most Goals, Game	18-University of Alabama, 2007 18-Furman University, 2006
Most Goals Allowed, Game	24-Emory University, 2007
Biggest Win	16-University of Alabama, 18-2, 2007
Worst Loss	17-University of South Carolina, 20-3, 2007
Number of Shutouts	1-Most recent vs. Alabama, 15-0, 2006
Longest Win Streak	4 games, 2006

Former Players

Andreas Arprian - 2006	Anthony Grazanti - 2007
Wills Beadle - 2006	AJ Henderson - 2006
Alex Beasley - 2006	Craig Holman - 2007
Chris Bruner - 2006	Matt Kleist - 2006
Gary Cason - 2007	Garrett Moll - 2007
Justin Claxton - 2006	Steven Orebaugh - 2006
Brett Davies - 2006-07	Steven Sandoval - 2007
Tyler Davis - 2006	Anthony Scrimo - 2006
Dean Dobson - 2007	Tyler Therrell - 2007
Jeremy Douthit - 2006-07	
Alex Drake - 2006-07	
Matt Ellington - 2006	
Glenn Farakesh - 2007	

Former Coaches

Jerry Douthit - 2006-07
Joe Tarogowski - 2006



Mohamad Said #20 gets ready to fakeout another opponent.
Photo by Dave Adams

Tim Minick #24 winds up for a shot against Georgia State.
Photo by Dave Adams



2008 KSU Club Lacrosse Owls in Action



Photo by Dave Adams
Captain Matt Byrne #17 and Charlie Roland #2 listen to Coach Byers during a timeout in 2007.



Photo by Dave Adams
Justin Ferna #7 wins a faceoff in the mud and rain against Georgia State.



Sean Barsin #13 rifles a shot towards the goal.
Photo by Dave Adams



Tanner Bruton #16 puts a dodge on his defensemen.
Photo by Dave Adams



Wes Bass #5 bends down and picks up a ground ball in traffic.
Photo by Dave Adams



Glenn Farakesh #26 looks to beat the doubleteam by passing to the crease.
Photo by Dave Adams



ATLANTA FIRE RESCUE

wishes the
KSU Club Lacrosse Owls

Good Luck in the 2008 Season



photo from www.gahighwaysafety.org

"ATLANTA'S BRAVEST"

Engine 15 Truck 15 Battalion 3



Specialties:

Arthroscopic Surgery, Surgery of the Spine, Hand and Foot, Total Joint Replacement, Fracture Care, Limb Lengthening and Deformity Correction, Pain Management, Sports Related Injuries, On-site Physical Therapy, and MRI Imaging at our Marietta Location

www.pinnacle-ortho.com

Austell 770-944-3303

Buckhead 404-352-8156

Canton 770-345-5717

Carrollton 770-944-3303

Douglasville 770-949-8558

East Cobb 770-579-8558

Jasper 706-692-1575

Lost Mountain 770-218-8800

Marietta 770-427-5717

Paulding 770-445-5666

Villa Rica 770-456-1659

Woodstock 770-926-9112

Invest in Your Spine Now!

*It will Pay Healthy Dividends
for the Rest of Your Life.*



Chiropractic is perfect for children and adults. It **WILL** make a difference in your health!



Dr. Lydia Dever
Gonstead Chiropractor



Dr. Michael Tomasello
Gonstead Chiropractor

We have great success in removing nerve pressure that may be related to:

- Numbness and Tingling
 - Sciatica
 - Back pain
- Ear infections
- Headaches
- Low energy



The Gold Standard in Chiropractic



678.290.3263

3903 Jiles Road • Kennesaw, GA 30144

www.hoopinsocker.com

Next to Legacy Park entrance

Give them exactly what they want. Every time.



To get your friends and family exactly what they want, there's only one thing you'll ever need. The Simon Giftcard®. It's welcome at any Simon® mall or wherever Visa® debit cards are accepted, even on-line. It's available in denominations from \$20 to \$500 and can be replaced if it's ever lost or stolen.* Purchase your Simon Giftcard today at Simon Guest Services.

SIMON
MALLS | more choices®



Handling fee applies. Terms and conditions apply (including an administrative fee of \$2.50 per month beginning in the thirteenth month after the month of card purchase, and additional fees which may apply) and are available at participating Simon malls, on-line at www.simongiftcard.com, and in materials which accompany each card. The Simon Giftcard is issued by MetaBank or U.S. Bank National Association. *Some restrictions apply.

simon.com®

2008 Calendar of Events

EVENT	DATE	DESCRIPTION
	Walking Helmets Feb 17 - May 4 (Spring) Sept 7 - Nov 2 (Fall)	Girls and Boys. Grades 1st - 5th. Instructional practices with games.
	Elite Travel Team May 17 (Tryouts) Aug 1-3 (Tourney)	High School Boys Elite Team travels to Syracuse, NY for a recruiting tournament.
	Summer Sizzler May 22 - July 31	Mixed Men's and HS league for players 16 yrs and up. 12-14 teams on Thursday night. GAMES ONLY!
	M.S. League May 28 - July 2	Girls and Boys grades 6-8. GAMES ONLY!
	Specialty Camps Mid June	Boys and Girls, all ages. Specialty instruction for each position (A, M,D, & G)
	Atlanta Elite H.S. Sept 6 - Nov 15	H.S. Boys only JV and Varsity league Sat or Sun games with 12-14 teams. GAMES ONLY!
	The Steve Tourney October 4 & 5	Men's Open Lacrosse Tourney. 12 teams compete for the DSL Championship Trophy!
	The War on the Floor Dec 7 - Feb 1	Mixed Men's and HS Indoor Box League for players from 16 yrs and up.

Register now at: WWW.DOUBLESTIXXLACROSSE.COM
Call 404-550-6619 or e-mail: drew@doublestixxlacrosse.com



Address

920 Woodstock Road
Suite 240
Roswell, GA 30075
770-640-1200
770-640-1222 Fax

Hours of Operation

Mon. - Fri. 11:00am to 7:00pm
Sat. 11:00am to 5:00pm
Sun. 12:00pm to 4:00pm

Directions From GA 400

- Exit Holcomb Bridge Rd. going west to Roswell (Hwy. 92)
- Continue on Holcomb Bridge Road about 4.5 miles. The road will change names first to Crossville Road and then to Woodstock Road as you pass the King Road intersection.
- Home Depot will be on the left and at the next traffic light turn left at West Wind Blvd.
- Make your first right into the shopping center behind The Integrity Bank.



ALL THE GEAR. ALL THE TIME.

www.laxworld-atlanta.com

770-640-1200

2008 Club Lacrosse Schedule

DATE	DAY	TIME	OPPONENT	LOCATION
Feb. 2	Sat.	1 PM CST	Alabama*	Tuscaloosa, AL
Feb. 10	Sun.	11 AM	Elon	KSU - Intramural Field
Feb. 17	Sun.	2 PM	Coastal Carolina	KSU - Intramural Field
Feb. 18	Mon.	8 AM	St. Thomas, MN.	KSU - Intramural Field
Feb. 23	Sat.	4 PM	SCAD	Savannah, GA
Feb. 24	Sun.	12 PM	Georgia Southern	Statesboro, GA
Mar. 1	Sat.	4 PM	Eckerd	KSU - Soccer Field
Mar. 16	Sun.	2 PM	GCSU	Milledgeville, GA
Mar. 21	Fri.	8 PM	Emory*	Atlanta, GA
Mar. 29	Sat.	2 PM	UNC - Charlotte	Charlotte, NC
Mar. 30	Sun.	12 PM	High Point	High Point, NC
Apr. 5	Sat.	2 PM	Furman*	KSU - Intramural Field
Apr. 6	Sun.	2 PM	Tennessee Wesleyan	KSU - Intramural Field
Apr. 18-22	Fri.-Sun.	All Day	SELC Championship	Northview HS Duluth, GA

* Denotes Divisional Game

www.ksulax.com